

Note

Before using this information and the product it supports, be sure to read the general information under *Appendix A. "Notices"* on page 7, and see *Appendix B. "Safety Notices"* on page 9.

First Edition (June 1996)

This edition applies to Version 1 Release 1 of Nways Multiprotocol Switched Services (MSS) Server Module.

Order publications through your IBM representative or the IBM branch office serving your locality. Publications are not stocked at the address given below.

A form for readers' comments appears at the back of this publication. If the form has been removed, address your comments to:

Department CGF
Design & Information Development
IBM Corporation
PO Box 12195
RESEARCH TRIANGLE PARK NC 27709-9990
USA

When you send information to IBM, you grant IBM a nonexclusive right to use or distribute the information in any way it believes appropriate without incurring any obligation to you.

© Copyright International Business Machines Corporation 1996. All rights reserved.

Note to U.S. Government Users—Documentation related to restricted rights—Use, duplication or disclosure is subject to restrictions set forth in GSA ADP Schedule Contract with IBM Corp.

About This Guide

This guide explains how to setup the IBM Nways Multiprotocol Switched Services (MSS) Server Module .

Who Should Use This Book

This guide is intended for the person responsible for installing the MSS Server Module. It is assumed that this person is familiar with installation and cabling charts.

Setting Up the MSS Server Module

These instructions explain how to install the MSS Server Module in the 8260 Hub. If you have any problems during setup, refer to "Problem Solving" on page 5.

1 Unpack and verify contents

Unpack the MSS Server Module and verify that the following items are included:

Hardware

- PCMCIA modem and cable (in many countries)
- PCMCIA hard drive (optional)

Documentation

In addition to this book, the package should include:

- CAUTION: Safety Information - Read Me First, SD21-0030
- *IBM Multiprotocol Switched Services Server Configuration and Operations Guide, SC30-3821*
- *IBM International Program License Agreement, 29H1286*
- *IPLA Pointer Sheet, 29H1287*
- *IBM ATM MSS Module Reference Card, GX27-4018*
- *IBM Multiprotocol Switched Services Server Softcopy Library CD-ROM, SK2T-0378*

Software

- Configuration Tool Program package (contains diskettes and information)
- Minimum A-CPSW code level **V2.2.0** is required to support the A-MSS module.

2 Carefully remove module from antistatic bag

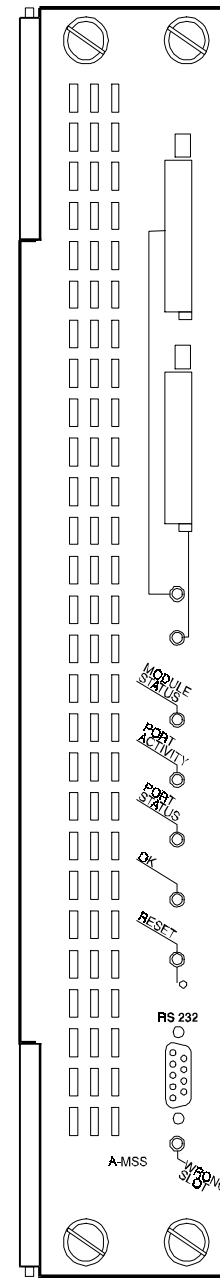
- 1 Remove the module, in its antistatic bag, from the shipping carton.

Electrostatic discharge (ESD) can damage the static-sensitive devices on circuit boards. To avoid this kind of damage, use the following precautions:

- Do not remove the board from its antistatic shielding bag until you are ready to insert it into the hub.
- Use correct grounding techniques when inspecting and installing the MSS Server Module. Use a foot strap and grounding mat, wear a grounded static discharge wrist strap, or touch a grounded rack or other source of ground before you handle the MSS Server Module.

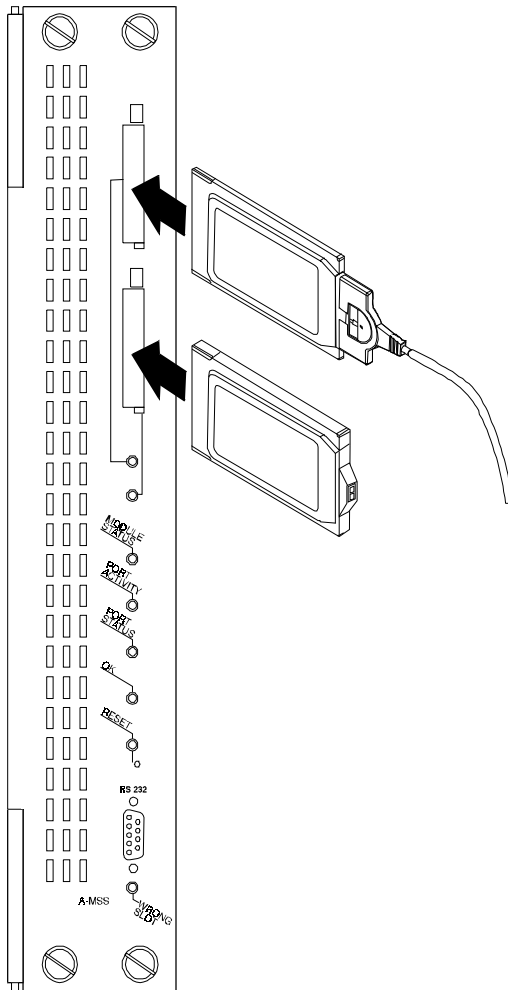
- 2 Remove the MSS Server Module from the antistatic bag. Inspect it for damage. Always handle the module by the faceplate; do not touch the components. If the module appears damaged, replace it in the antistatic bag, and contact your local supplier.

3 Front Panel



Install PCMCIA devices

4



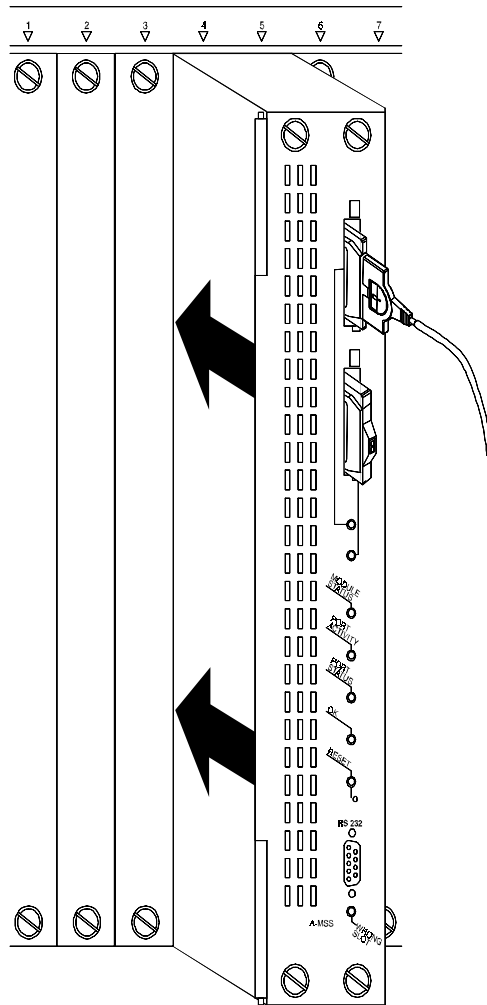
Note: Proper installation according to these instructions is a condition for compliance to the regulations of electromagnetic interference (See Appendix A for additional information.).

Install the PCMCIA modem in the top PCMCIA slot and attach its modem cable. Verify that it is correctly seated in the slot and that the cable is correctly attached.

Install the PCMCIA hard drive in the bottom PCMCIA slot.

Insert module in hub

5



Installing the MSS

Server Module does not require you to power down the hub. You can hot-swap the MSS Server Module like other 8260 modules, that is, you can insert the module into the appropriate slot and remove it while the hub is operating.

Grasp the MSS Server Module by the top and bottom of the faceplate, carefully insert the module into its slot, and guide it straight while pressing evenly and firmly to correctly seat the module connectors into the hub backplane.

When it is completely seated, tighten the thumb-screws to secure the module.

Connect and enable the ATM backplane

6

You must connect and enable the MSS Server Module for the 8260 Hub to recognize it and to enable the MSS Server Module. Use the following steps to connect and enable the MSS Server Module. (Refer to *ATM Control Point and Switch Module Installation and User's Guide*, SA33-0326 for details about the commands and problem determination.)

At the A-CPSW console:

1. Connect the ATM backplane by entering **SET MODULE *slot* CONNECTED** (where *slot* identifies the leftmost slot occupied by the module, 1 to 8, or 12 to 17).
2. Enable the ATM backplane by entering **SET PORT *slot.1* ENABLE UNI** (where *slot* identifies the leftmost slot occupied by the module, 1 to 8, or 12 to 17).
3. Save the backplane connections by entering the **SAVE MODULE_PORT** command.
4. If you want to verify the backplane connection, enter **SHOW MODULE *slot* VERBOSE** (where *slot* identifies the leftmost slot occupied by the module, 1 to 8, or 12 to 17).

Verify module LEDs

7

Verify the following LED conditions:

- Top PCMCIA slot LED should be OFF.
- Bottom PCMCIA slot LED should be OFF.
- **Module Status** LED should be ON (Green).
- **Port Activity** The PORT ACTIVITY LED comes on when there is activity on the port. When the A-MSS module is in the Hub, the PORT ACTIVITY LED may come on, if there is traffic flowing to the MSS Server Module when you look at it.
- **Port Status** LED should be ON (Green)
- **OK** LED should be ON (Green)
- **Reset** LED should be OFF.
- **8260 Wrong Slot** LED should be OFF.

See the “Problem Solving” on page 5 if the LEDs are not as described above.

Hardware installation is complete.

Contact Network Administrator

8

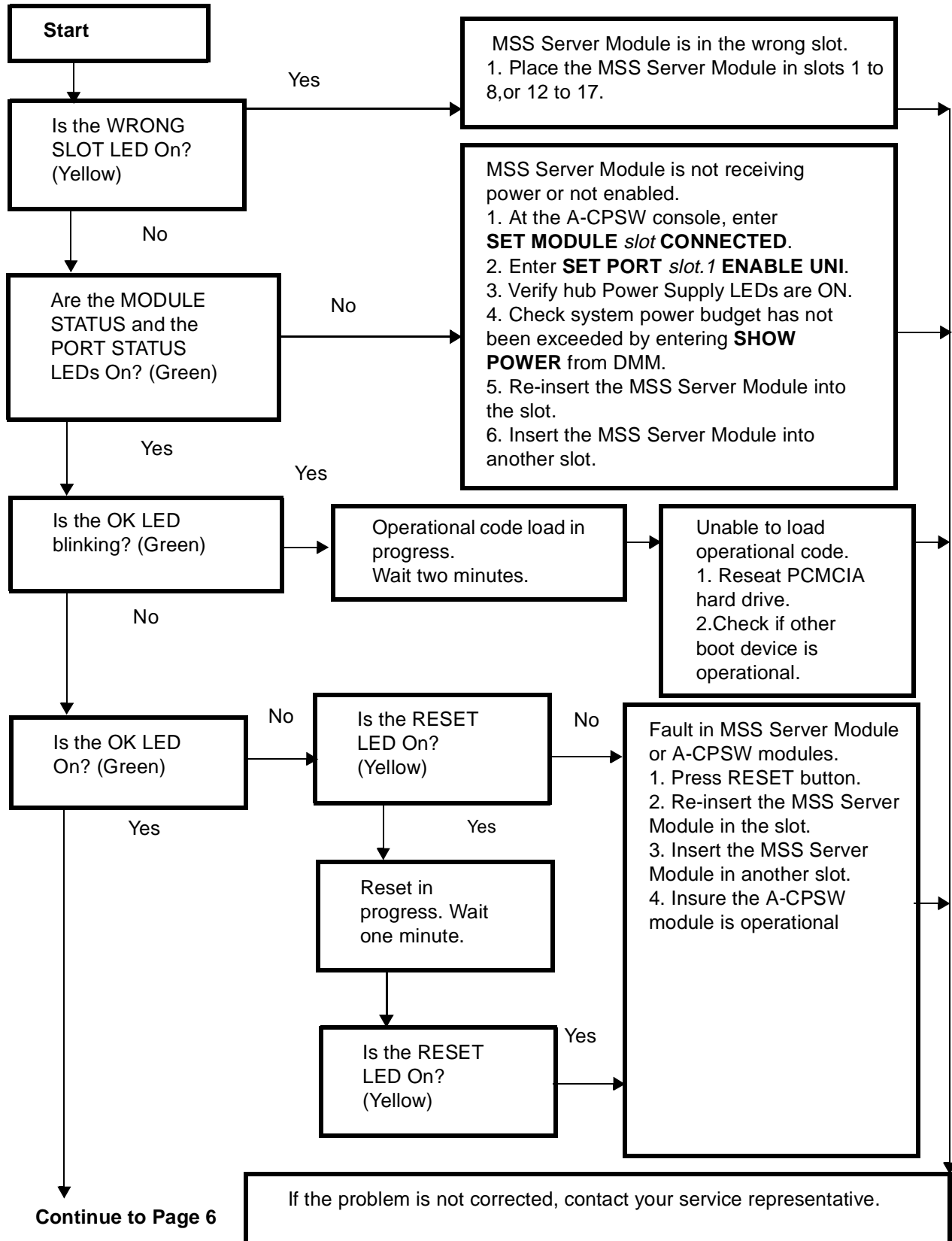
The MSS Server Module must be configured to be fully operational. Inform your network administrator that the unit has been installed and is operating correctly.

Your network administrator must download a configuration file for the unit for it to function. The *8210 Multiprotocol Switched Services Configuration Guide* gives instructions for building and downloading the configuration file.

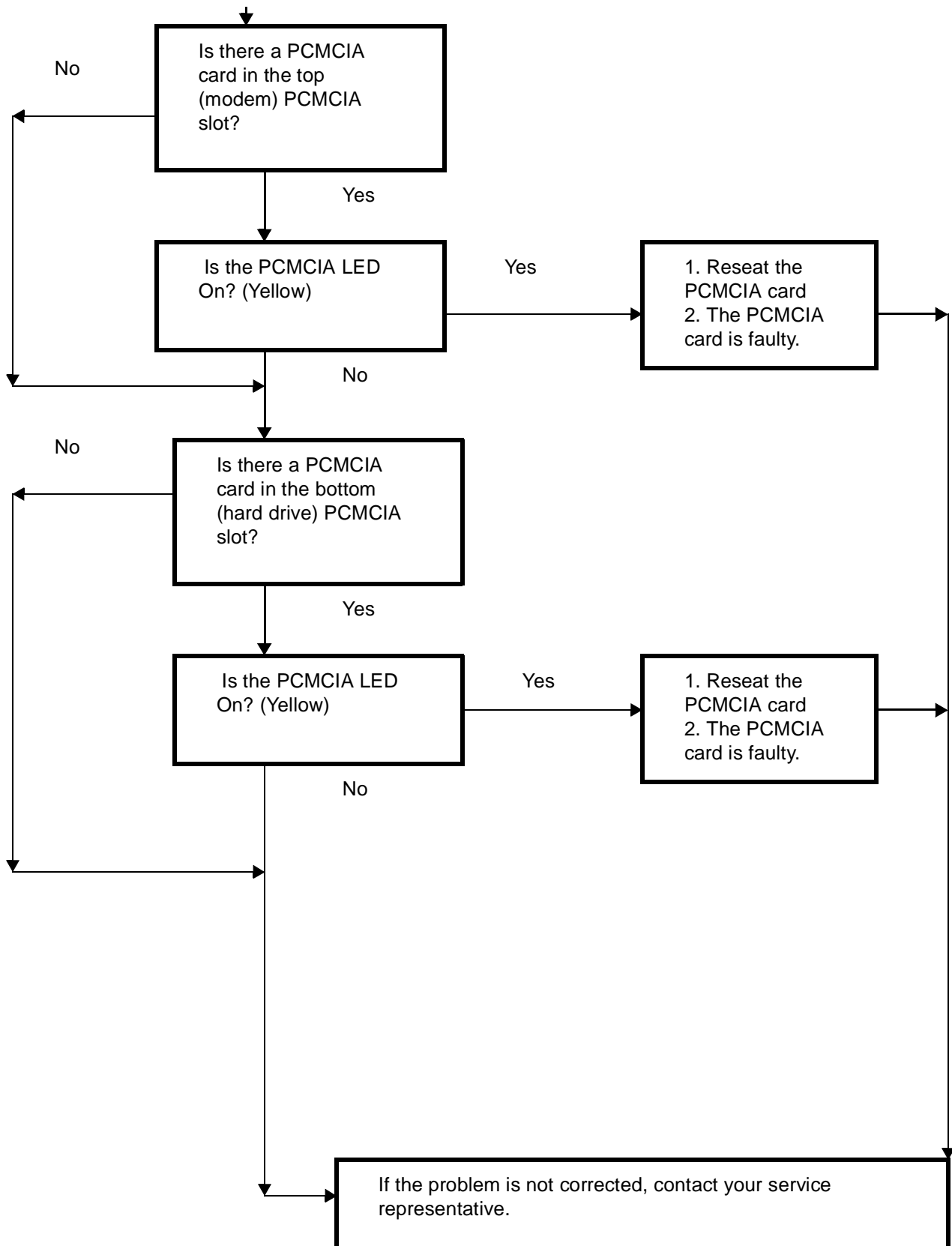
Provide your network administrator with the telephone number of the modem in your MSS Server Module.

Installation and Configuration are complete.

Problem Solving



Continued
from Page 5.



Appendix A. Notices

References in this publication to IBM products, programs, or services do not imply that IBM intends to make these available in all countries in which IBM operates. Any reference to an IBM product, program, or service is not intended to state or imply that only IBM's product, program, or service may be used. Subject to IBM's valid intellectual property, or to other legally protectable rights, any functionally equivalent product, program, or service that does not infringe any of IBM's intellectual property rights may be used instead of the IBM product, program, or service. The evaluation and verification of operation in conjunction with, other products, except those expressly designated by IBM, are the user's responsibility.

IBM may have patents or pending patent applications covering subject matter in this document. The furnishing of this document does not give you any license to these patents. You can send license inquiries, in writing, to the IBM Director of Licensing, IBM Corporation, 500 Columbus Avenue, Thornwood, NY 10594 USA.

Electronic Emission Notices

Federal Communications Commission (FCC) Statement

Note: This equipment has been tested and found to comply with the limits for a Class A digital device, pursuant to Part 15 of the FCC Rules. These limits are designed to provide reasonable protection against harmful interference when the equipment is operated in a commercial environment. This equipment generates, uses, and can radiate radio frequency energy and, if not installed and used in accordance with the instruction manual, may cause harmful interference to radio communications. Operation of this equipment in a residential area is likely to cause harmful interference, in which case the user will be required to correct the interference at his own expense.

Properly shielded and grounded cables and connectors (IBM part number 55H8694 or its equivalent for the data/fax/voice modem, or IBM part number 72H4447 or equivalent for the data/fax modem) must be used in order to meet the FCC emission limits. IBM is not responsible for any radio or television interference caused by using other than recommended cables and connectors or by unauthorized changes or modifications to this equipment. Unauthorized changes or modifications could void the user's authority to operate the equipment.

This device complies with Part 15 of the FCC Rules. Operation is subject to the following two conditions: (1) this device may not cause harmful interference, and (2) this device must accept any interference received, including interference that may cause undesired operation.

Industry Canada Compliance Statement

This Class A digital apparatus meets the requirements of the Canadian Interference-Causing Equipment Regulations.

Avis de conformité aux normes d'Industrie Canada

Cet appareil numérique de la classe A respecte toutes les exigences du Règlement sur le matériel brouilleur du Canada.

European Union (EU) Mark of Conformity Statement

This product is in conformity with the protection requirements of EU Council Directive 89/336/EEC on the approximation of the laws of the Member States relating to electromagnetic compatibility. IBM cannot accept responsibility for any failure to satisfy the protection requirements resulting from a non-recommended modification of the product, including the fitting of non-IBM option cards.

This product has been tested and found to comply with the limits for Class A Information Technology Equipment according to CISPR 22/European Standard EN 55022. The limits for Class A equipment were derived for commercial and industrial environments to provide reasonable protection against interference with licensed communication equipment.

Properly shielded and grounded cables and connectors (IBM part number 72H4447 or its equivalent for the data/fax modem) must be used in order to reduce the potential for causing interference to radio and TV communications and to other electrical or electronic equipment. IBM cannot accept responsibility for any interference caused by using other than recommended cables and connectors.

WARNING: This is a Class A product. In a domestic environment this product may cause radio interference in which case the user may be required to take adequate measures.

Dieses Gerät ist berechtigt in Übereinstimmung mit dem deutschen EMVG vom 9.Nov.92 das EG-Konformitätszeichen zu führen. Der Außsteller der Konformitätserklärung ist die IBM Spain, Division of Fabricacion, 46185 La Pobla de Vallbona, Valencia, Spain.

Dieses Gerät erfüllt die Bedingungen der EN/55022 Klasse/A. Für diese Klasse von Geräten gilt folgende Bestimmung nach dem EMVG:

Geräte dürfen an Orten, für die sie nicht ausreichend entstört sind, nur mit besonderer Genehmigung des Bundesministers für Post und Telekommunikation oder des Bundesamtes für Post und Telekommunikation betrieben werden. Die Genehmigung wird erteilt, wenn keine elektromagnetischen Störungen zu erwarten sind. (Auszug aus dem EMVG vom 9.Nov.92, Para.3, Abs.4)

Hinweis: Dieses Genehmigungsverfahren ist von der Deutschen Bundespost noch nicht veröffentlicht worden.

Japanese Voluntary Control Council for Interference (VCCI) Statement

This equipment is in the 1st Class category (information equipment to be used in commercial and/or industrial areas) and conforms to the standards set by the Voluntary Control for Interference Council for Interference by Information Technology Equipment aimed at preventing radio interference in commercial and industrial areas. Consequently, when used in a residential area or in an adjacent area thereto, radio interference may be caused to radios and TV receivers, and so on.

Read the instructions for correct handling.

New Zealand Radiocommunications (Radio) Regulations

Warning: This is a Class A product. In a domestic environment this product may cause radio interference in which case the user may be required to take adequate measures.

Appendix B. Safety Information

U.K. Safety Approval

The ATM Multiprotocol Switch Server (A-MSS) Module is manufactured to the International Safety Standard EN 60950 and as such is approved in the U.K. under the General Approval number NS/G/1234/J/100003 for indirect connection to the public telecommunication network.



Danger: Before you begin to install this product, read the safety information in *Caution: Safety Information - Read This First*, SD21-0030. This booklet describes safe procedures for cabling and plugging in electrical equipment.



Varning - livsfara: Innan du börjar installera den här produkten bör du läsa säkerhetsinformationen i dokumentet *Varning: Säkerhetsföreskrifter - Läs detta först*, SD21-0030. Där beskrivs hur du på ett säkert sätt ansluter elektrisk utrustning.



Fare: Før du begynner å installere dette produktet, må du lese sikkerhetsinformasjonen i *Advarsel: Sikkerhetsinformasjon - Les dette først*, SD21-0030 som beskriver sikkerhetsrutinene for kabling og tilkobling av elektrisk utstyr.



Fare! Før du installerer dette produkt, skal du læse sikkerhedsforskrifterne i *NB: Sikkerhedsforskrifter - Læs dette først*, SD21-0030. Vejledningen beskriver den fremgangsmåde, du skal bruge ved tilslutning af kabler og udstyr.



Gevaar: Voordat u begint met de installatie van dit product, moet u eerst de veiligheidsinstructies lezen in de brochure *PAS OP! Veiligheidsinstructies - Lees dit eerst*, SD21-0030. Hierin wordt beschreven hoe u elektrische apparatuur op een veilige manier moet bekabelen en aansluiten.



Gevaar Voordat u begint met het installeren van dit produkt, dient u eerst de veiligheidsrichtlijnen te lezen die zijn vermeld in de publikatie *Caution: Safety Information - Read This First*, SD21-0030. In dit boekje vindt u veilige procedures voor het aansluiten van elektrische apparatuur.



Vorsicht: Bevor mit der Installation des Produktes begonnen wird, die Sicherheitshinweise in *Achtung: Sicherheitsinformationen - Bitte zuerst lesen*, IBM Form SD21-0030. Diese Veröffentlichung beschreibt die Sicherheitsvorkehrungen für das Verkabeln und Anschließen elektrischer Geräte.



危険： 導入作業を開始する前に、安全に関する小冊子SD21-0030 の「最初にお読みください」(Read This First)の項をお読みください。この小冊子は、電気機器の安全な配線と接続の手順について説明しています。



Danger: Avant d'installer le présent produit, consultez le livret *Attention: Informations pour la sécurité - Lisez-moi d'abord*, SD21-0030, qui décrit les procédures à respecter pour effectuer les opérations de câblage et brancher les équipements électriques en toute sécurité.



Danger: Avant de procéder à l'installation de ce produit, lisez d'abord les consignes de sécurité dans la brochure *ATTENTION: Consignes de sécurité - A lire au préalable*, SD21-0030. Cette brochure décrit les procédures pour câbler et connecter les appareils électriques en toute sécurité.



Pericolo: prima di iniziare l'installazione di questo prodotto, leggere le informazioni relative alla sicurezza riportate nell'opuscolo *Attenzione: Informazioni di sicurezza - Prime informazioni da leggere* in cui sono descritte le procedure per il cablaggio ed il collegamento di apparecchiature elettriche.



Perigo: Antes de iniciar a instalação deste produto, leia as informações de segurança *Cuidado: Informações de Segurança - Leia Primeiro*, SD21-0030. Este documento descreve como efectuar, de um modo seguro, as ligações eléctricas dos equipamentos.



Peligro: Antes de empezar a instalar este producto, lea la información de seguridad en *Atención: Información de Seguridad - Lea Esto Primero*, SD21-0030. Este documento describe los procedimientos de seguridad para cablear y enchufar equipos eléctricos.



Perigo: Antes de começar a instalar este produto, leia as informações de segurança contidas em *Cuidado: Informações Sobre Segurança - Leia Isto Primeiro*, SD21-0030. Esse folheto descreve procedimentos de segurança para a instalação de cabos e conexões em equipamentos elétricos.



VAARA: Ennen kuin aloitat tämän tuotteen asennuksen, lue julkaisussa *Varoitus: Turvaohjeet - Lue tämä ensin*, SD21-0030, olevat turvaohjeet. Tässä kirjasessa on ohjeet siitä, miten sähkölaitteet kaapeloidaan ja kytketään turvallisesti.



위험: 이 제품을 설치하기 전에 반드시
"주의: 안전 정보-시작하기 전에"
(SD21-0030) 에 있는 안전 정보를
읽으십시오.



危險：安裝本產品之前，請先閱讀
"Caution: Safety Information--Read
This First" SD21-0030 手冊中所提
供的安全注意事項。這本手冊將會說明
使用電器設備的纜線及電源的安全程序。



Uwaga:

Przed rozpoczęciem instalacji produktu należy zapoznać się z instrukcją:

"Caution: Safety Information - Read This First", SD21-0030.

Zawiera ona warunki bezpieczeństwa przy podłączeniu do sieci elektrycznej i eksploatacji.



Upozornění: než zahájíte instalaci tohoto produktu, přečtěte si nejprve bezpečnostní informace v pokynech „Bezpečnostní informace“ č. 21-0030. Tato brožurka popisuje bezpečnostní opatření pro kabeláž a zapojení elektrického zařízení.



Vigyázat: Mielőtt megkezdi a berendezés üzembe helyezését, olvassa el a *Caution: Safety Information - Read This First*, SD21-0030 könyvecskében leírt biztonsági információkat. Ez a könyv leírja, milyen biztonsági intézkedéseket kell megtenni az elektromos berendezés huzalozásakor illetve csatlakoztatásakor.



Pozor: Preden začnete z instalacijo tega produkta preberite poglavje: "Opozorilo: Informacije o varnem rokovanju-preberi pred uporabo," SD21-0030. To poglavje opisuje pravilne postopke za kabliranje.

Trademarks

The terms IBM and Nways are trademarks of IBM Corporation in the United States or other countries or both.

Other company, product, and service names, which may be denoted by a double asterisk (**), may be trademarks or service marks of others.

